



Bureau of Safety and Environmental Enforcement



Mission



*“To promote safety, protect the environment,
and conserve resources offshore through
vigorous regulatory oversight and
enforcement”*

About BSEE



- **Headquarters in Washington, DC, and Herndon, VA**
 - Director's Office
 - Strategic Engagement
 - Administration
 - Office of Offshore Regulatory Programs (OORP)
 - Oil Spill Response Division (OSRD)
 - Environmental Enforcement Division (EED)
- **Regional and District Offices:**
 - Regional: New Orleans, LA; Camarillo, CA; and Anchorage, AK
 - District Offices:
 - Review Applications for Permit to Drill
 - Conduct inspections of drilling rigs and production platforms
 - Enforce compliance

BSEE Divisions



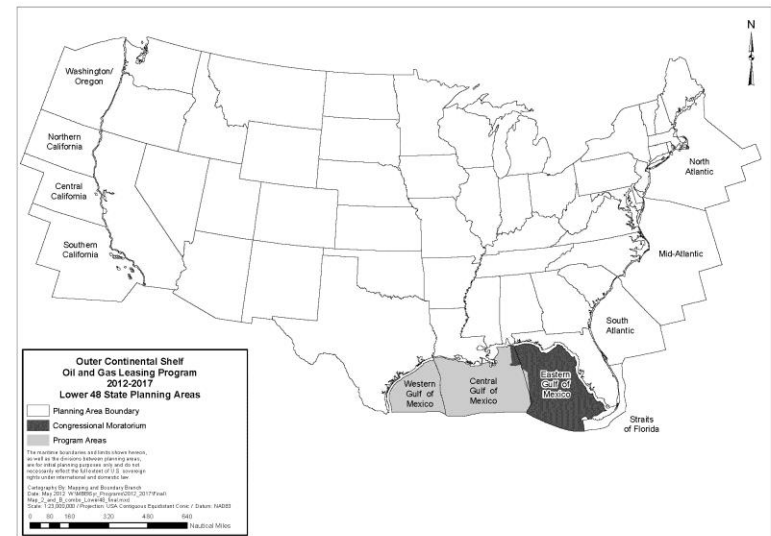
- **Strategic Engagement:** Coordinates bureau engagement with keys stakeholders including the public, Congress, and international organizations.
- **Office of Offshore Regulatory Programs (OORP):** Develops regulations and reviews standards
- **Oil Spill Response Division (OSRD):** Develops standards and guidelines for offshore operators' Oil Spill Response Plans (OSRP), oversees OHMSETT
- **Environmental Enforcement Division (EED):** Provide regulatory oversight focused on compliance with all applicable environmental regulations
- **Administration (OA):** Provides administrative support to BSEE and other departmental offices and bureaus on a reimbursable basis

Gulf of Mexico Region



BSEE's largest region, sophisticated technology, established infrastructure

- Five Districts Offices
- 417 employees
- 106 inspectors
- 1,092 producing leases (as of 12/31/13)
- 2013 production
 - 451,334,821 BBL and 1,316,146,027 Mcf
- 22,658 inspections completed in 2013
- Permits issued in 2013
 - 1,052 Applications for Permit to Drill (APD)
 - 6,181 Applications for Permit to Modify (APM)
- Production Facilities (June 2014)
 - 2586
- Drilling Activity (June 2014)
 - 118 active (at all depths)

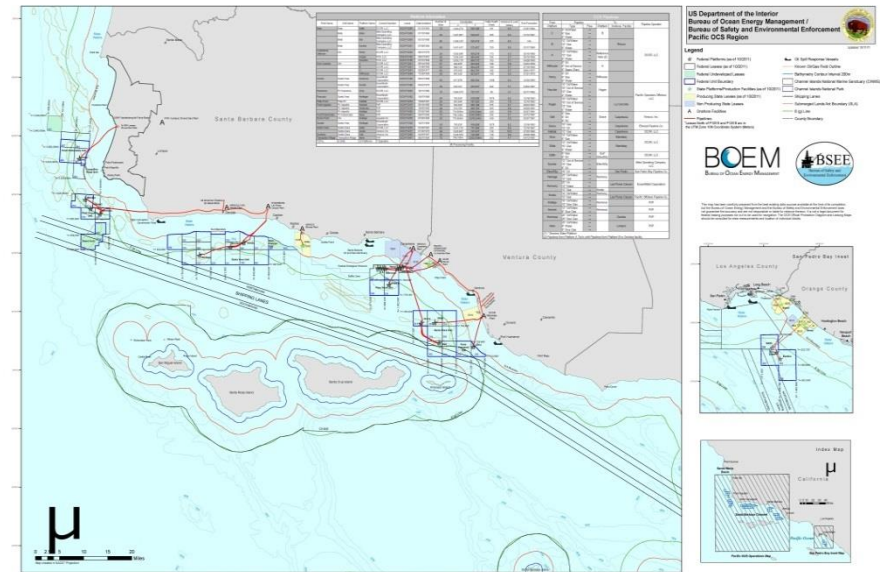


Pacific Region



Well established, mature development, first OCS activity, no new leasing, and aging infrastructure.

- 45 Employees
- 6 Inspectors
- 43 Producing Leases
- 2012 Production
 - 18,020,305 BBL of oil and 26,890,145 MCF of gas
- 1040 Inspections completed in 2013
- Permits Issued in 2013
 - 27 APDs and 100 APM

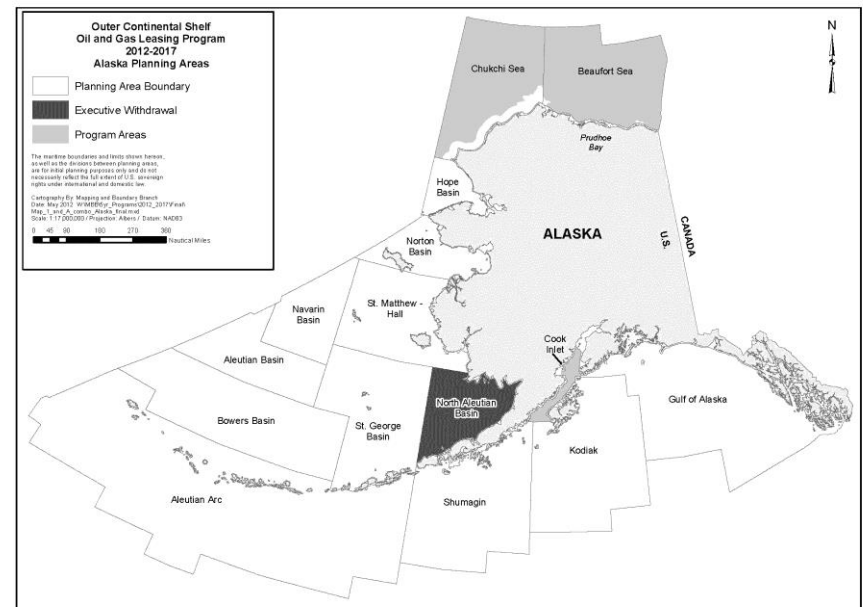


Alaska Region



The frontier, region significant resource, unique environmental and subsistence conditions

- 13 employees
- 1 inspectors
 - 3 backup inspectors
- 3 producing leases (from gravel island in Alaska State Waters)
- 2013 production
 - 604,668 barrels out of 3,389,396 barrels total unit production
- 2 meter inspections at Northstar in 2013.
- Approved 3 APM for Northstar



Challenges



- Expansion into frontier areas (e.g., deeper water, Arctic)
- Rapid pace of technology innovation
- The great shift change
- Transitioning from operational planning to strategic visioning

Strategic Planning



- 2012-2015 strategic plan
 - Regulate, enforce, and respond to OCS development using the full range of authorities and tools to compel safety, emergency preparedness, environmental responsibility and conservation of the offshore resources
 - Build and sustain the organizational, technical, and intellectual capacity within and across BSEE's key functions
- Enterprise risk management
- Next steps:
 - Develop 2016-2019 plan
 - Strategic visioning



Website: www.bsee.gov



@BSEEGov



BSEEGov



Bureau of Safety and
Environmental Enforcement