

Human Progress and Human Services 2035

For

Foresight in Government

Joint PSFN, FFCOI, APF Meeting

July 27, 2018

Supported by

THE KRESGE FOUNDATION



Vulnerability 2030

Scenarios on Vulnerability in the United States

Earlier IAF Scenarios

Primary Care

Public Health 2030: A Scenario Exploration



Vulnerability

Primary Care 2025 A Scenario Exploration



Supported by a grant from
THE KRESGE FOUNDATION



Supported
by grants
from

Robert Wood Johnson Foundation
THE KRESGE FOUNDATION

Public Health

Creating & Using the Human Services 2035 Scenarios

Create community ownership

Develop assumptions and forecasts

Build Scenarios

Explore implications

Develop recommendations

Create preferred futures

The Human Services 2035 Effort

National Scenarios

National Scenario Workshop

State & Local Efforts

States

- **Connecticut**
- **Mississippi**

Counties

- **Jefferson County (CO)**
- **San Diego County (CA)**
- **Montgomery County (MD)**

Cities

- **San Antonio (TX)**
- **Memphis (TN)**
- **Richmond (VA)**

Scenario Zones in IAF's Aspirational Futures

Visionary/Surprisingly Successful

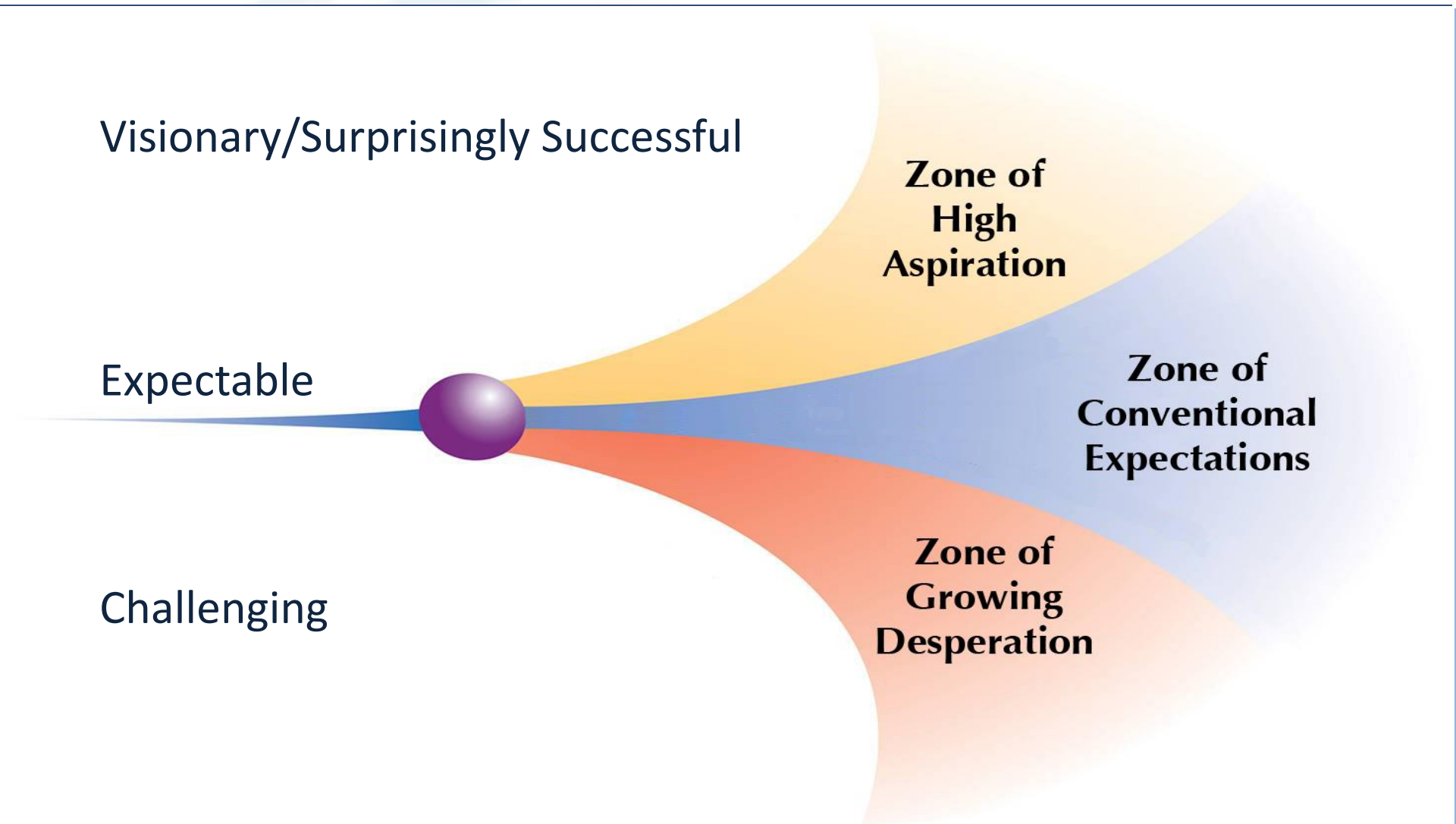
**Zone of
High
Aspiration**

Expectable

**Zone of
Conventional
Expectations**

Challenging

**Zone of
Growing
Desperation**



Economy/ Poverty

MACROENVIRONMENT

**U.S.; STATES &
CITIES**

**Operating
Environment**

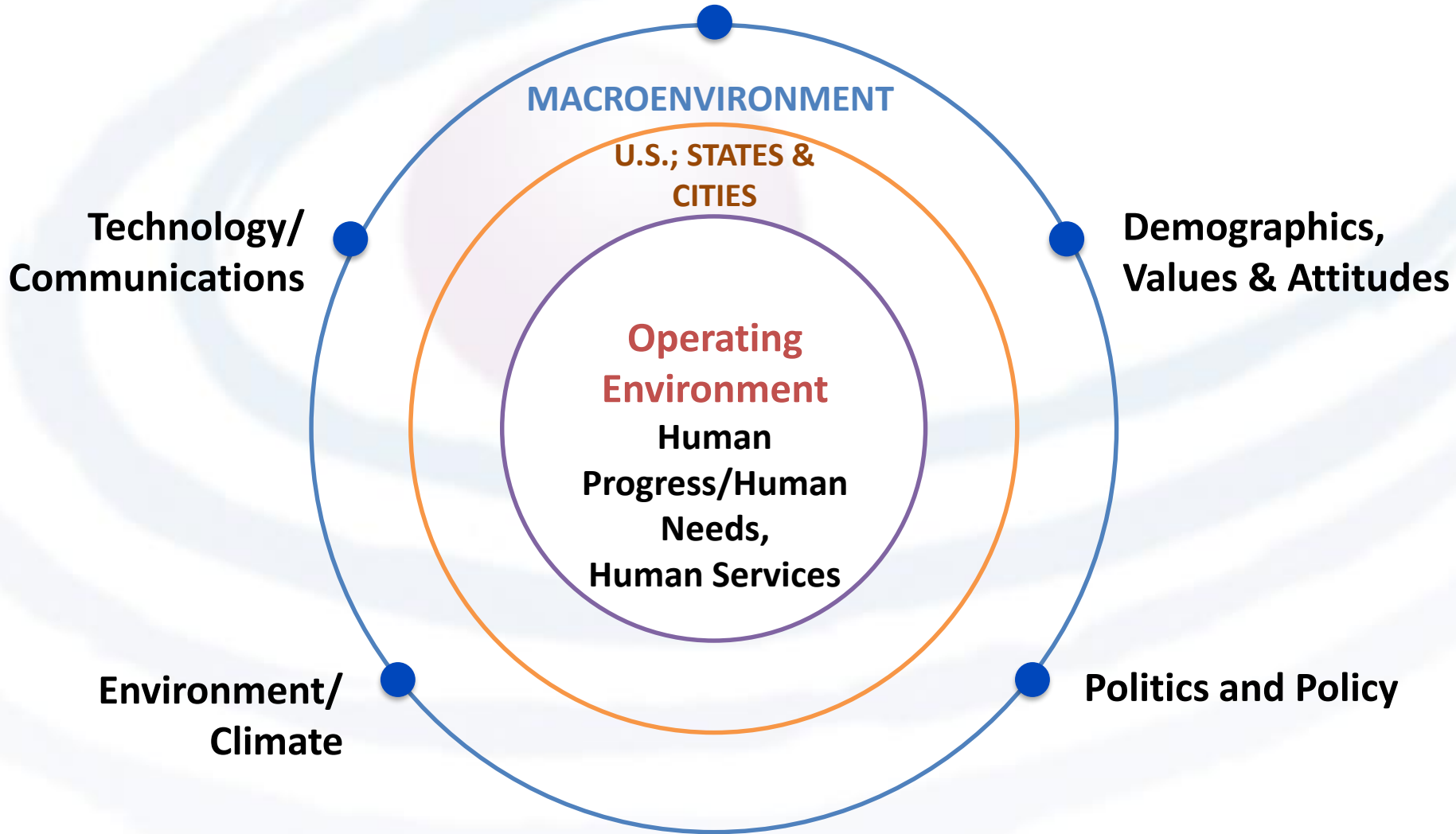
**Human
Progress/Human
Needs,
Human Services**

**Demographics,
Values & Attitudes**

**Technology/
Communications**

Politics and Policy

**Environment/
Climate**



Specific Human Service Areas

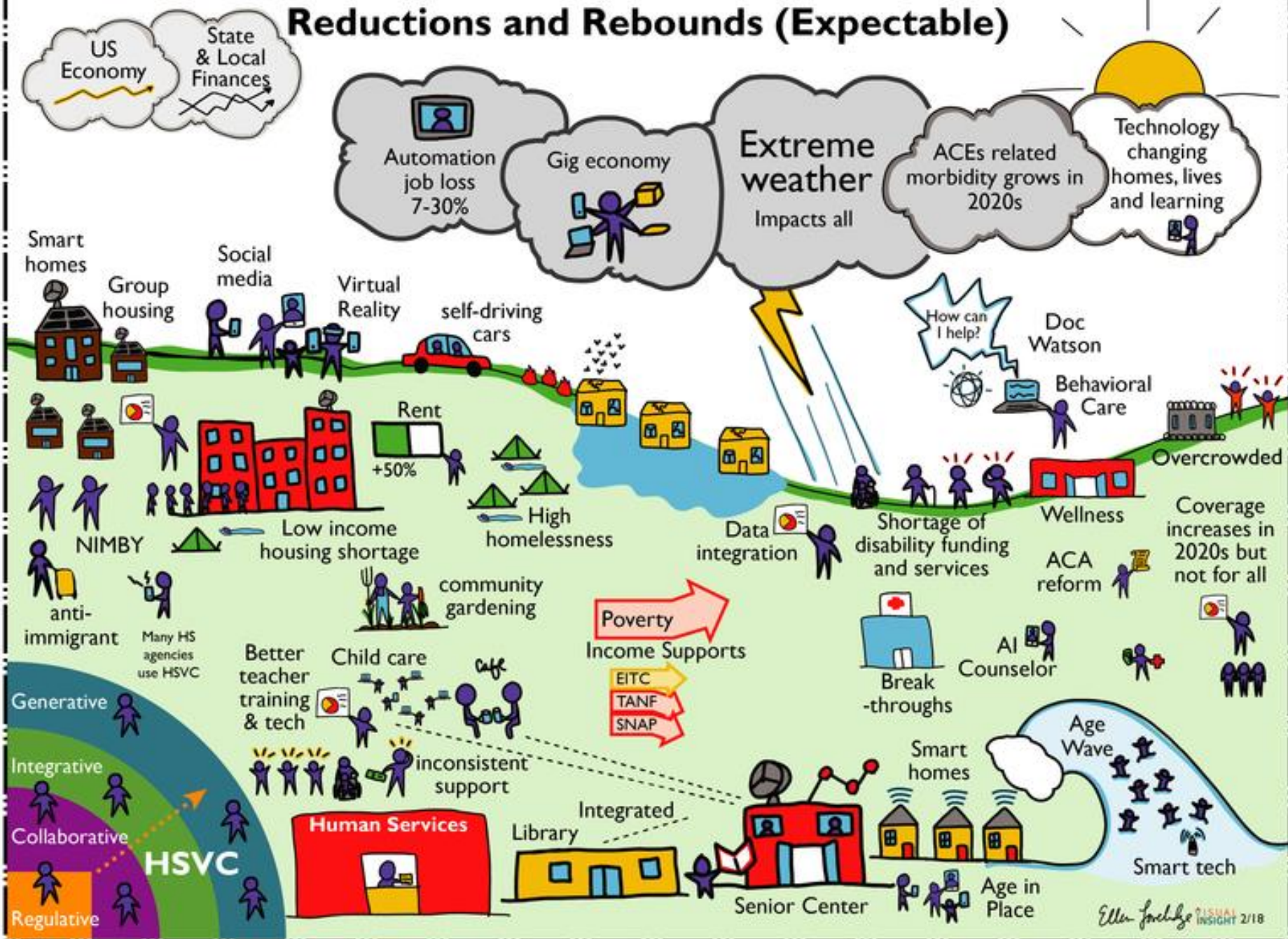
- Child, Youth and Family Services
- Aging Services
- Disability Services
- Behavioral Health
- Housing Services
- Income Supports



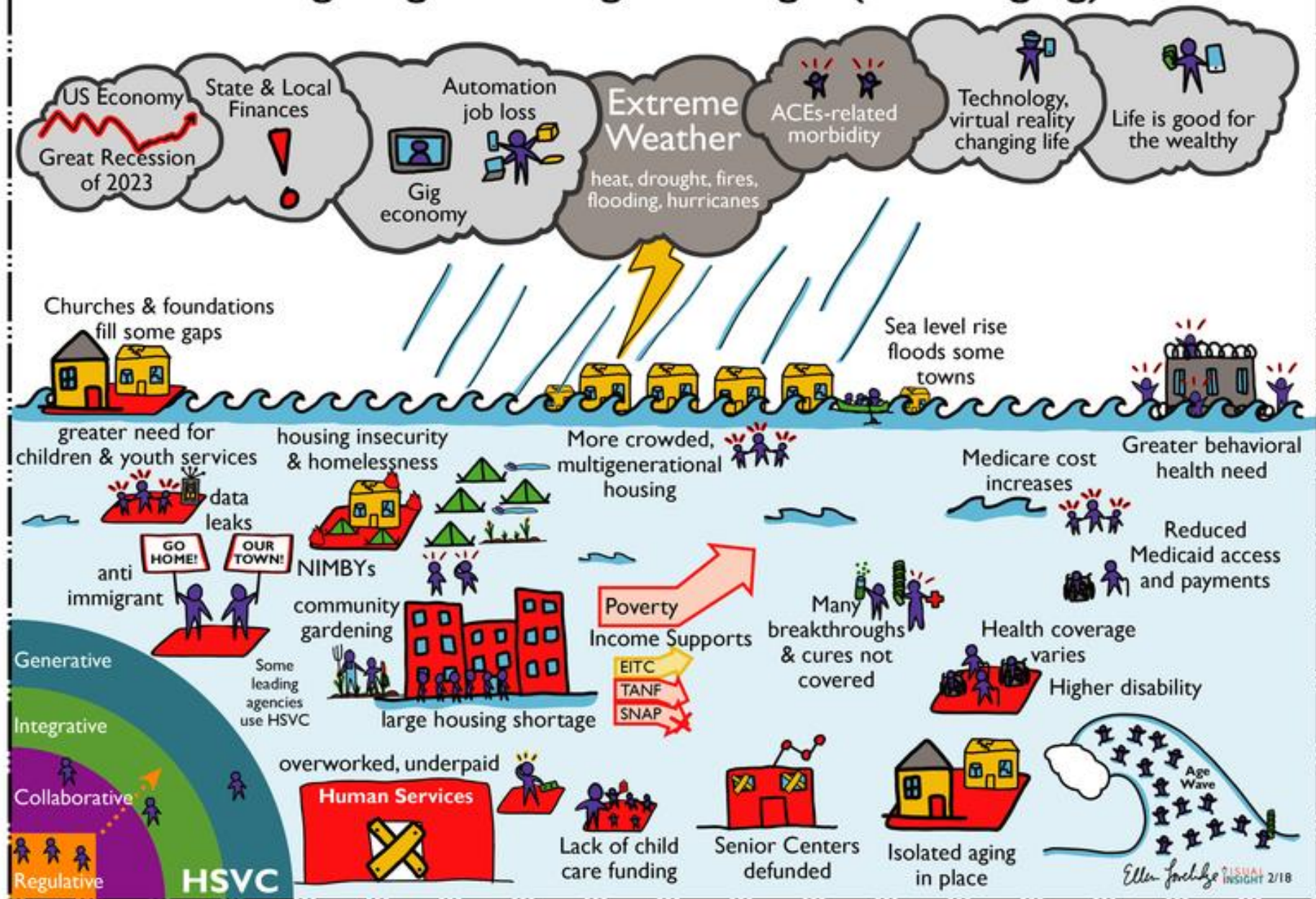
The Human Progress and Human Services 2035 Scenarios

1. Reductions and Rebounds (Expectable)
2. Navigating Unending Challenges (Challenging)
3. Building Human Potential (Visionary A)
4. Thriving Communities (Visionary B)

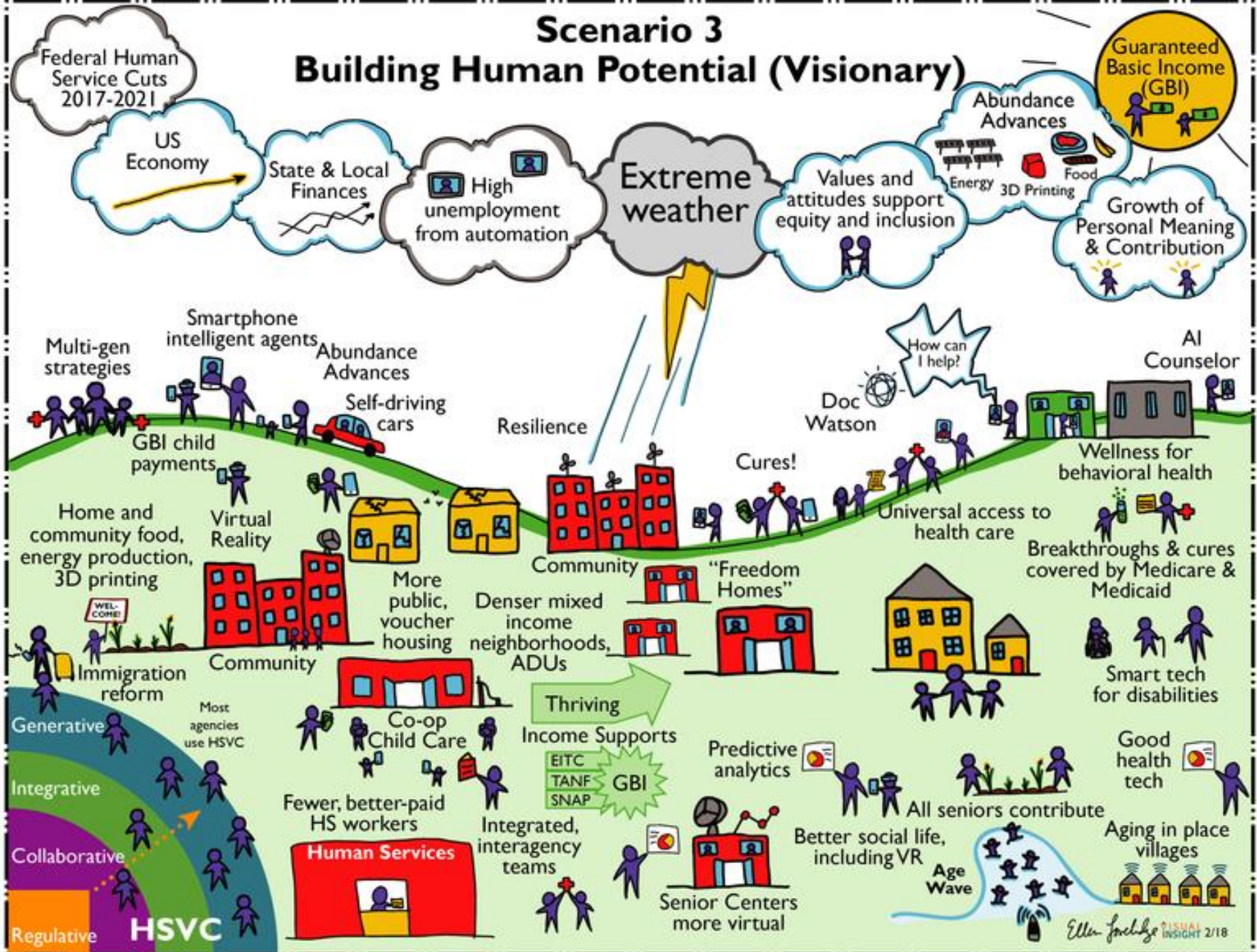
Scenario I Reductions and Rebounds (Expectable)



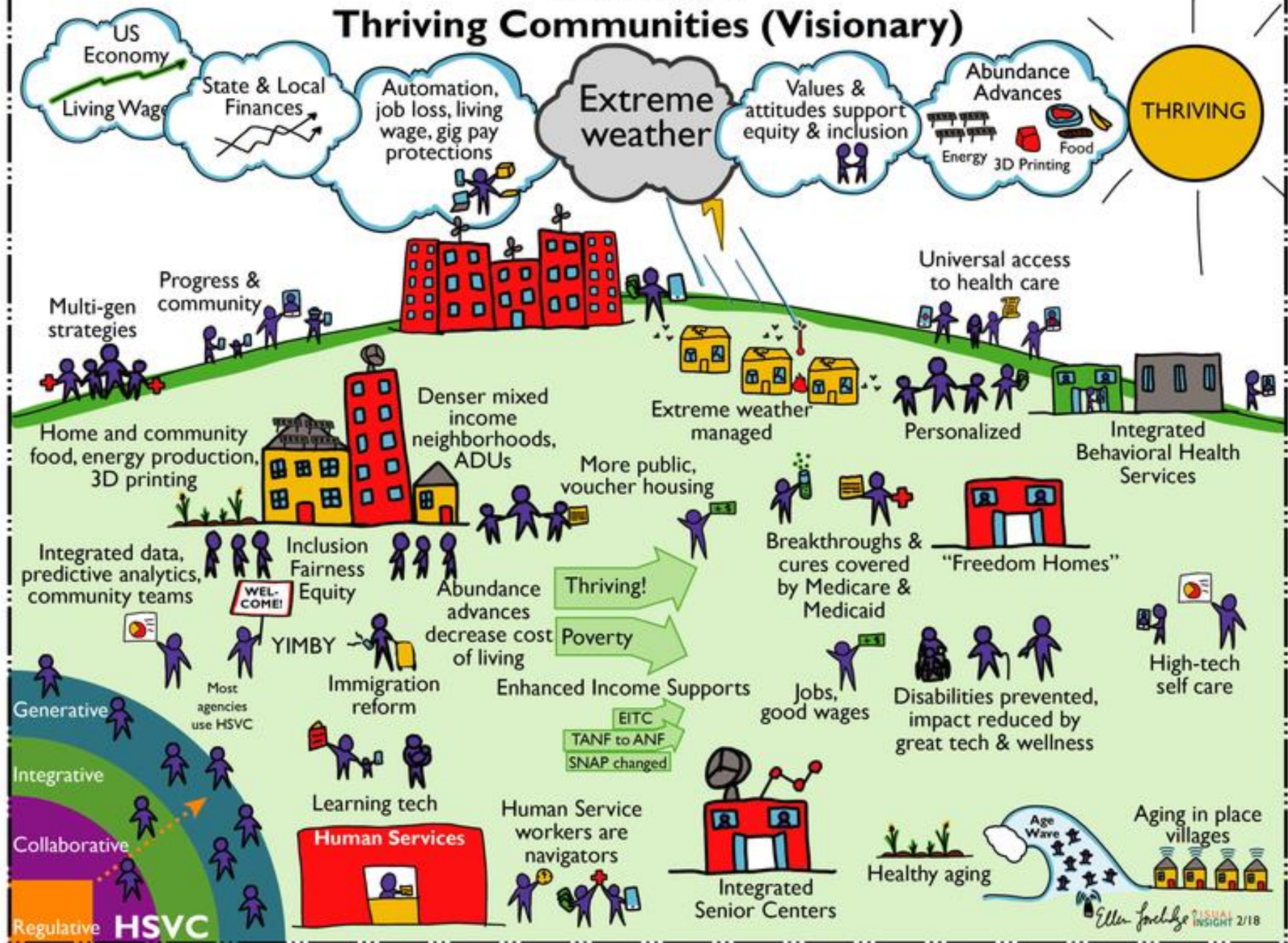
Scenario 2 Navigating Unending Challenges (Challenging)



Scenario 3 Building Human Potential (Visionary)



Scenario 4 Thriving Communities (Visionary)



	Scenario 1: Expectable	Scenario 2: Challenging	Scenario 3: Visionary A	Scenario 4: Visionary B
National	Reductions and Rebounds	Navigating Unending Challenges	Building Human Potential	Thriving Communities
Connecticut	The Land of Steady Habits	YOYO: You're on Your Own	North Star	New Charter Oak
Mississippi	Mississippi Rising	We Fall Down, But We Get Up Again	Opportunity for All	Generous, Empathic and Helpful
Jefferson County, CO	The Good, the Bad and the Ugly	Dark Side of the Moon	Field of Dreams	Epic 14'er
San Diego County, CA	Work in Progress	Troubled Times	Living Well	Thrive
Montgomery County, MD	Cloudy	Big Storms	Beautiful Days	Blue Skies
Memphis, TN	A Tale of Two Cities	Challenges Shape Caring	Rock and Roll Again	Abundance, Good Work, Good Caring
Richmond, VA	Older Dominion	A Tale of Two Cities	Monuments of Equity	Come One, Come All
San Antonio, TX	The Least We Will Do	Even Scarier	Fiesta	SA 2020 Realized

Results

- Learning
- Enhanced partnerships
- Vision/Aspirations review
- Strategy check; robustness testing
- Recommendations

Recommendation Areas

1. Promote equity in human centered design
2. Enhance human service leadership and vision
3. Change the narrative - build public will and support with a long-term campaign around building well-being
4. Focus on Financial Capabilities and Models
5. Recognize the fundamental role that safe and stable housing plays in health and well-being
6. Anticipate Changing Job Realities, Workforce Development and “Making a Contribution”
7. Enhance Technology and Strategic Capacities

The Scenarios and Tool Kit

- The national scenarios and 8 state and local sets
 - Tool kit for communities, agencies

Are available at

<http://altfutures.org/projects/human-progress-and-human-services-2035>

Or

Google “Human Services 2035”

Thank You!

THE KRESGE FOUNDATION

