



Introduction of National Assembly Futures Institute

2018. 7. 27



국회미래연구원
NATIONAL ASSEMBLY FUTURES INSTITUTE

Presenter



Jin PARK, Ph.D. (jinparkinkr@gmail.com)

President, National Assembly Futures Institute

1987 : B.A. in economics, Seoul National University

1991 : Ph.D. in economics, Univ. of Pennsylvania

1992~1998 : Research fellow, KDI

1998~2001 : Director, Administrative Reform Team,
Ministry of Planning and Budget

2001~ : Professor, KDI School (www.kdischool.ac.kr, absence of leave)

2008~2010 : President, Korea Institute for Future Strategies

2012~2013 : Director, Research Center for State-Owned Entities

2018~ : President, National Assembly Futures Institute

Field of Expertise:

Development Economics, Public Finance, Public Sector Reform

Experience in international consulting:

Vietnam (2017–18), Myanmar (2015–17), Guatemala (2010),

Namibia (2009), Indonesia (2008~2011), Turkey (2007) ...

Facts

Objective of the Institute

By forecast and analysis of the futures, formulate a long-term national strategies

Why in National Assembly?

Think-tank under the Executive Branch has following limitations.

- Continuity of research and research horizon
- Synergy among diverse fields
- Independence from the executive bodies
- Independence from political parties
- Consensus-building

Location

2nd Floor, Office Building for Members of Parliament, Seoul, Korea



History

■ 19th National Assembly (2012. 5 – 2016. 5)

- Feb. 2014 Law on NAFI proposed to the Committee for NA Operation
- Sep. 2015 Advisory Committee for the Speaker on Future Strategy
(Publish 'Suggestions for the Futures', May 2016.)
- Oct. 2015 Last review of the proposed law, but no more progress

■ 20th National Assembly (2016.5 - 2020.5)

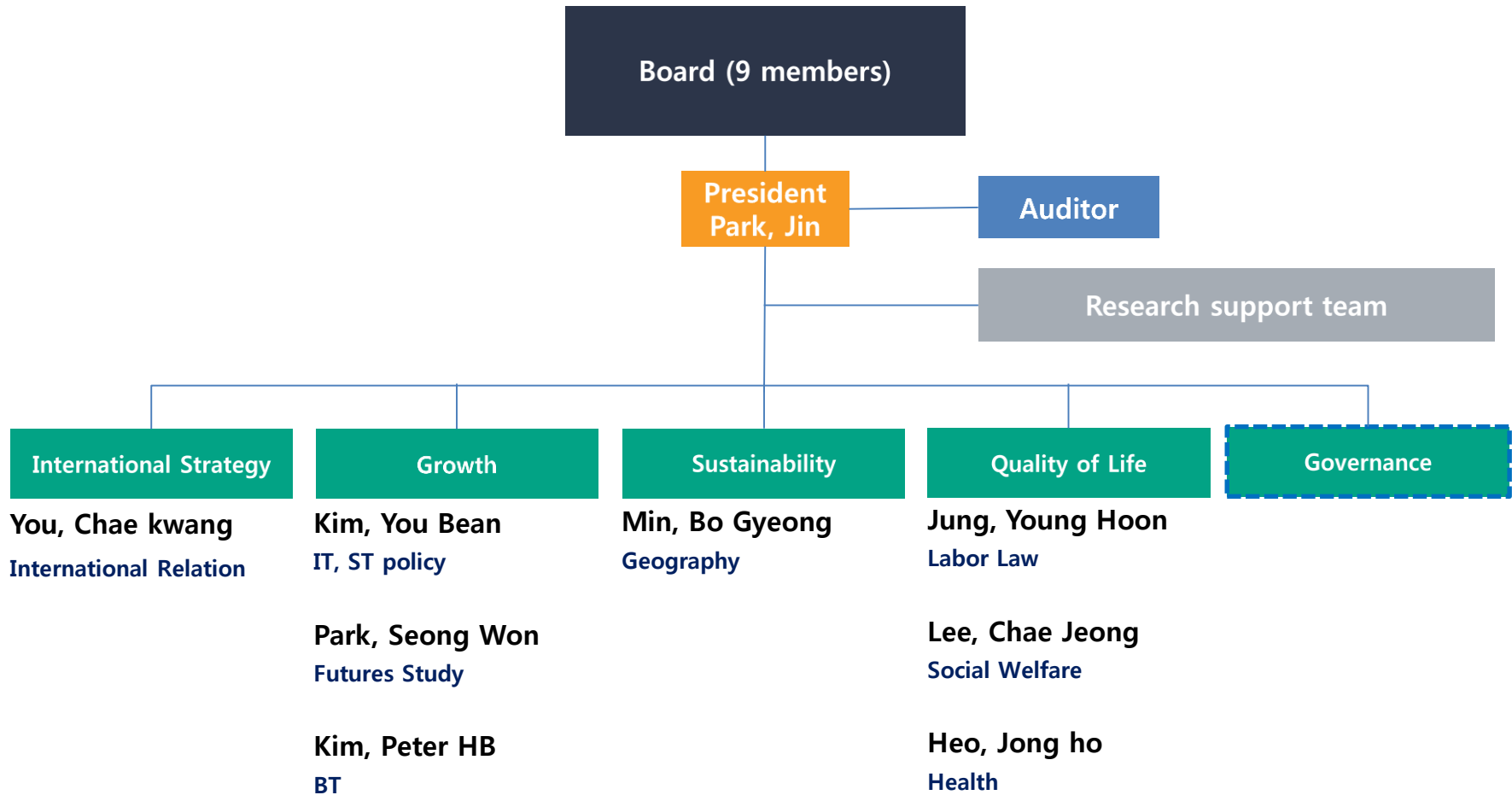
- Mar. 2017 Law on NAFI proposed to the Committee for NA Operation
- Nov. 2017 Pass the National Assembly
- Jan. 2018 Preparation Committee for NAFI
- Mar. 2018 Formulation of the Board of NAFI
- May 2018 Appointment of the NAFI President upon the approval by the Committee
- May 2018 Foundation Day (May 28, 2018)
- Jul. 2018 New Speaker of NA (Mr. Moon, Hee Sang)



Fields of Study



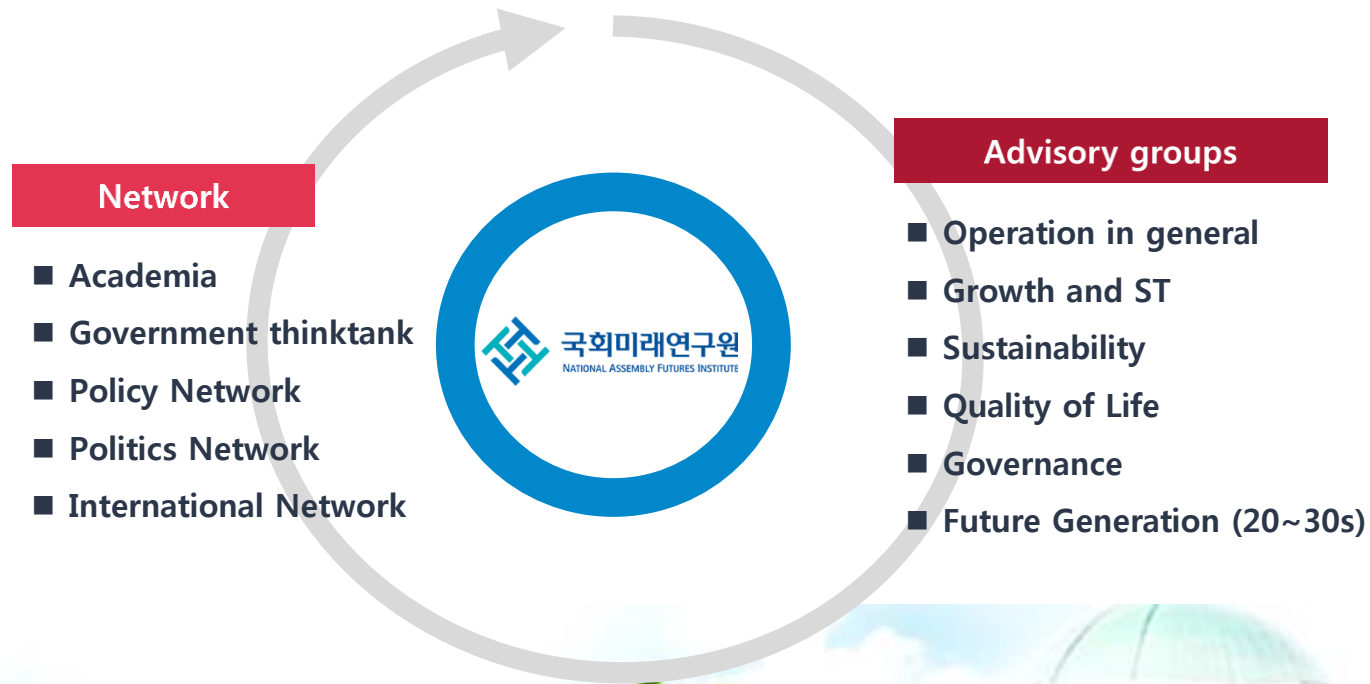
Organization



Research Process

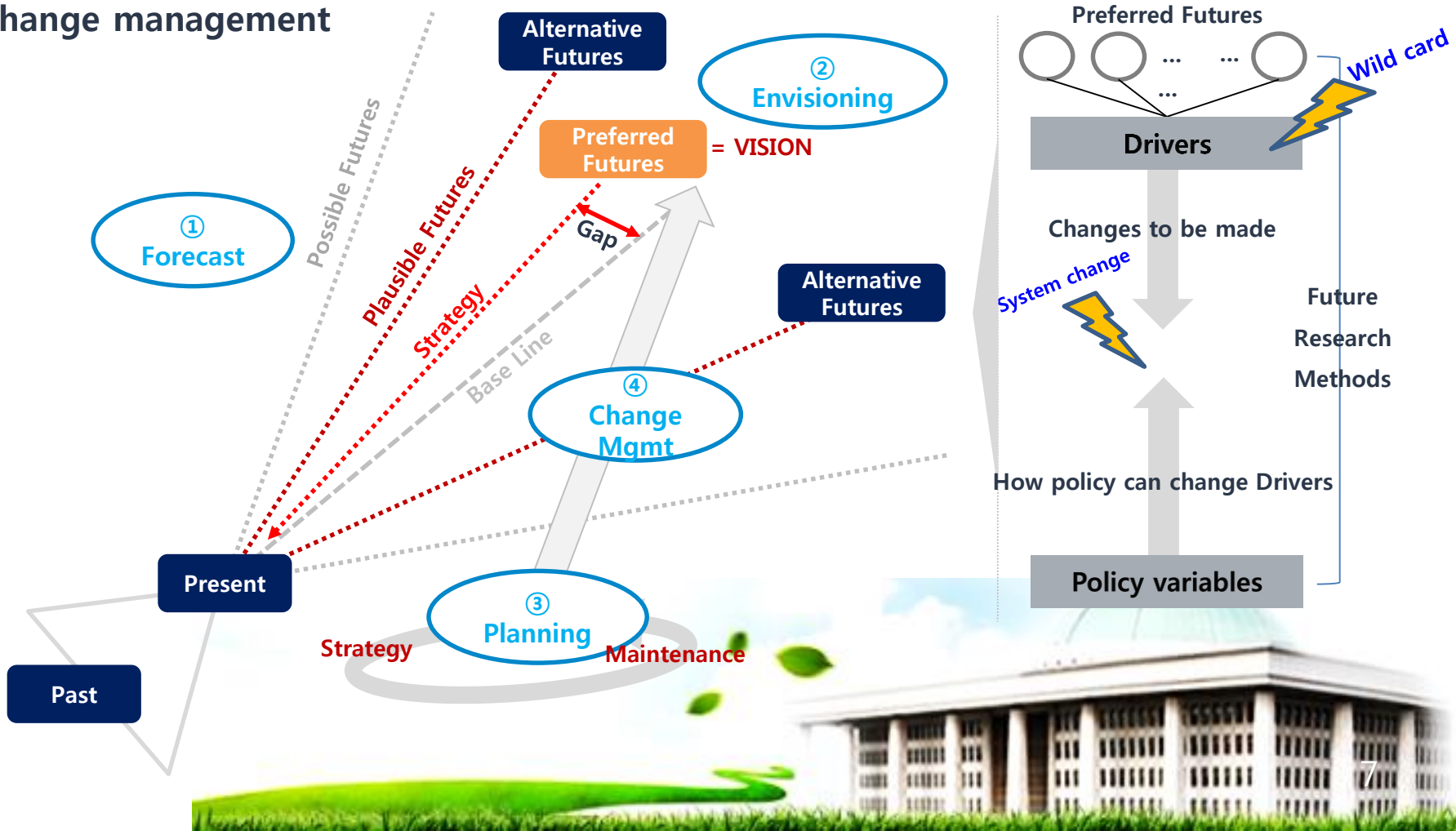


- Selection of Research Topic : Suggestion from the Speaker and MPs, Board, Committee
- Research as a process of consensus building
- Utilization of research : Dissemination within NA, Citizen



Futures Studies

- Forecast: Drivers of change, emerging issues, Scenarios of the future
- Envisioning: Preferred future
- Planning: Strategy
- Change management



Plan for 2018

■ Reseach Foundation

- Research Method
- Forecast: Drivers of change, Emerging issues analysis, Scenarios of the future
- Envisioning: Citizen's Choice for futures
- Planning: Policies to be Reformed now

■ An issue study: North Korea

■ Network Building

- Domestic
- International

■ Communication with Citizen (www.nafi.re.kr)



Case: Future of N. Korea and Its Implication

Should S.Korea support Kim or aim to change N.K. regime?

Should S. Korea try to win the mind of North Korean people?

< Scenarios of North Korea >

		Complete disposal of Nuke	Fake disposal of Nuke
Prosper under Chairman Kim		Peace	Peace with risks
Crash	Military coup	Regression	Reaction by Kim
	Revolution	Choice of N.K. People	



Vision of NAFI

“Citizen’s Partner for new Futures”

Thank you

